



Evaluation of Animal Bites for Rabies Risk

What constitutes an exposure?

Any penetration of skin by the teeth of a potentially rabid animal or contamination of scratches, abrasions, open wounds or mucous membranes with saliva or other potentially infectious material (such as brain tissue) of a potentially rabid animal.

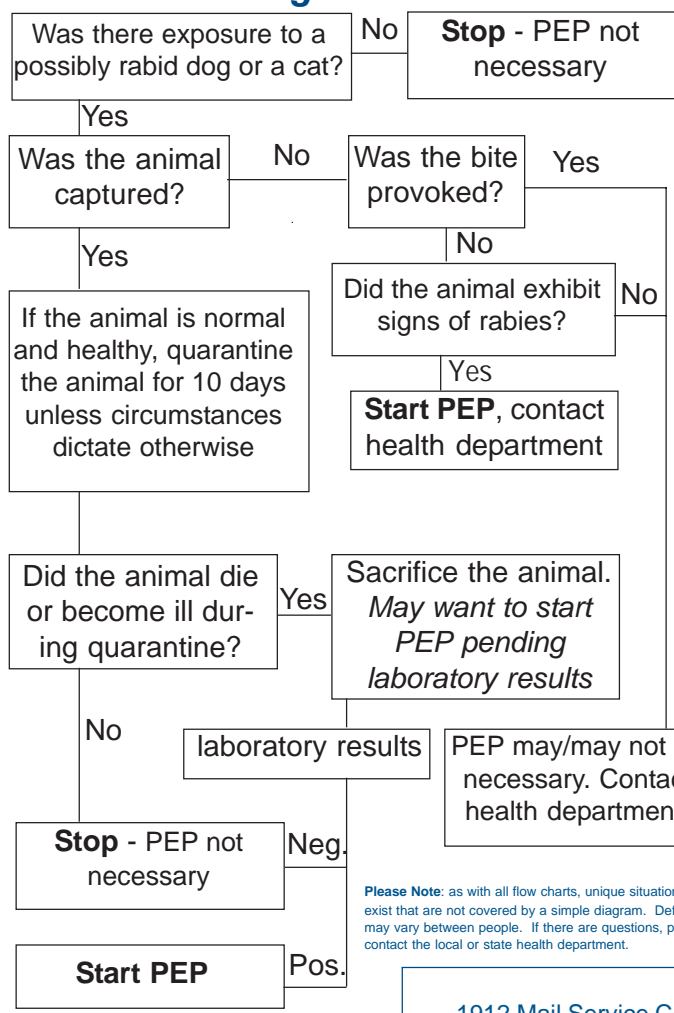
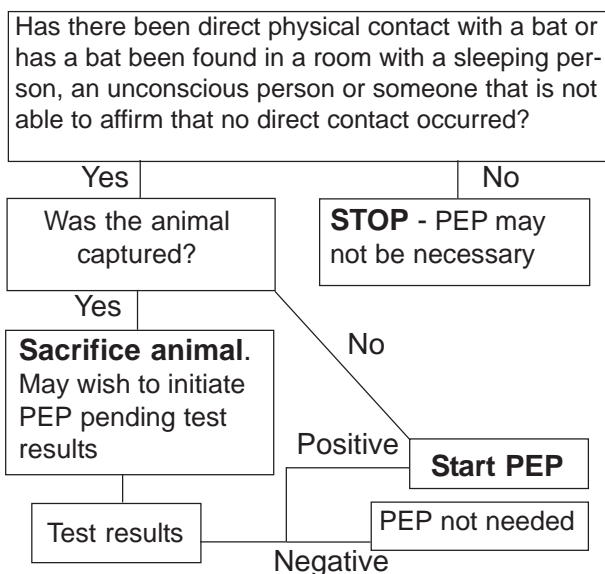
Evaluating the risk of exposure to the virus

- * When did the exposure occur?
- * What was the animal species?
- * Can the patient positively identify the dog or cat?
- * What were the circumstances of the exposure: provoked or unprovoked?
- * Was there exposure to rabies virus as defined above?
- * Was the animal captured? If a dog or cat, what is the possibility that it will be captured?

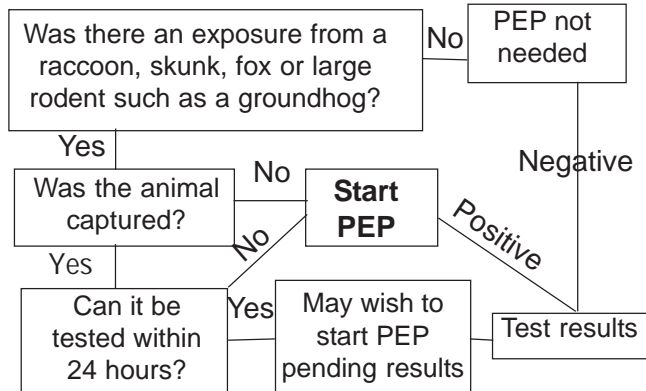
PEP = post-exposure prophylaxis

Bats

Dogs & Cats



Wild Animals



Please Note: as with all flow charts, unique situations may exist that are not covered by a simple diagram. Definitions may vary between people. If there are questions, please contact the local or state health department.

